

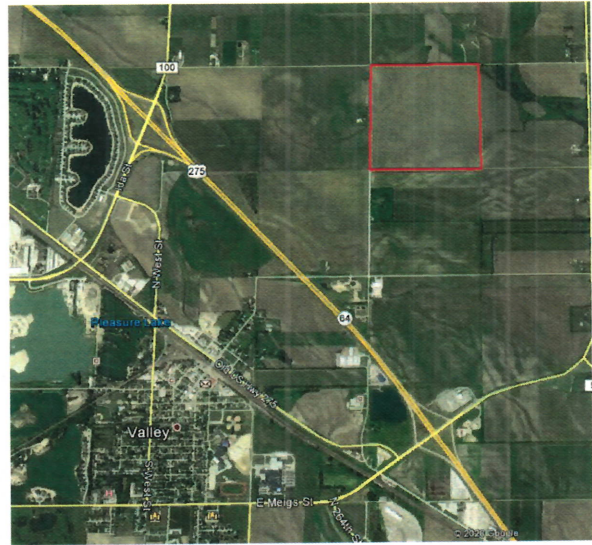
LAND FOR SALE

160 acres +/-
Douglas County, NE

Location: From the HWY 275 & HWY 64 Interchange northeast of Valley travel north on 276th Street for 0.20 miles. Then, west on State Street for 1.0 mile. The northwest corner of the farm is located at the intersection of 264th & State Street. Watch for signs!

Legal Description: The NW $\frac{1}{4}$ in Section 29, T16N, R10E of the 6th P.M., Douglas County, Nebraska.

Real Estate Taxes: \$13,712.60 (2019)



Property Description: The property consists of 154.26 acres of center pivot irrigated cropland. The land is nearly level in topography and consists of Class II soil types. The irrigation equipment is included with the sale. The irrigation equipment consists of a 2008 Valley 8000 Series pivot, diesel motor and fuel tank. More information on the irrigation equipment can be found on the website.

Asking Price: \$8,000 per Acre

PATHFINDER COMPANY
FARM MANAGEMENT & REAL ESTATE SERVICES
1416 East 23rd Street – Fremont, NE
Office: (402) 721-5055



Roger Koertner- Broker
(402) 720-1196



Andy Langemeier- Broker
(402) 720-9909



Ron Schultz- Broker
(402) 720-1193

www.pathfindercompany.com